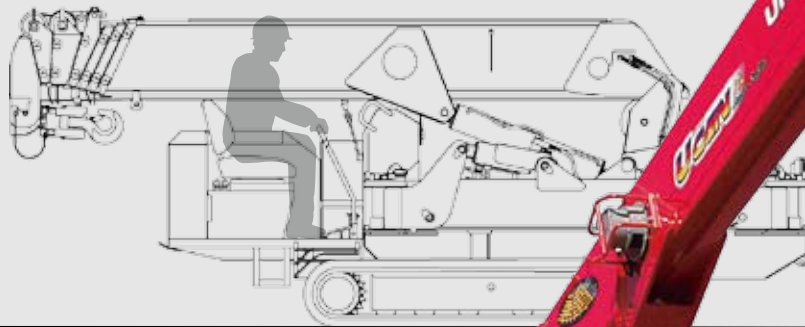


# URW547C

URW547C provides maximum hook height of 18.2m with its seven section hydraulic boom.



with Safe load indicator (Option)



Max.  
**18.2m**  
Hook height (Approx.)  
(Above ground level)

Max.  
**4.05t  
x2.5m**  
Lifting capacity

Max.  
**17.83m**  
Working radius

**5020kg**  
Mass of crane

Radio remote control

Photo: Standard model

## SPECIFICATIONS [with Electric power unit]

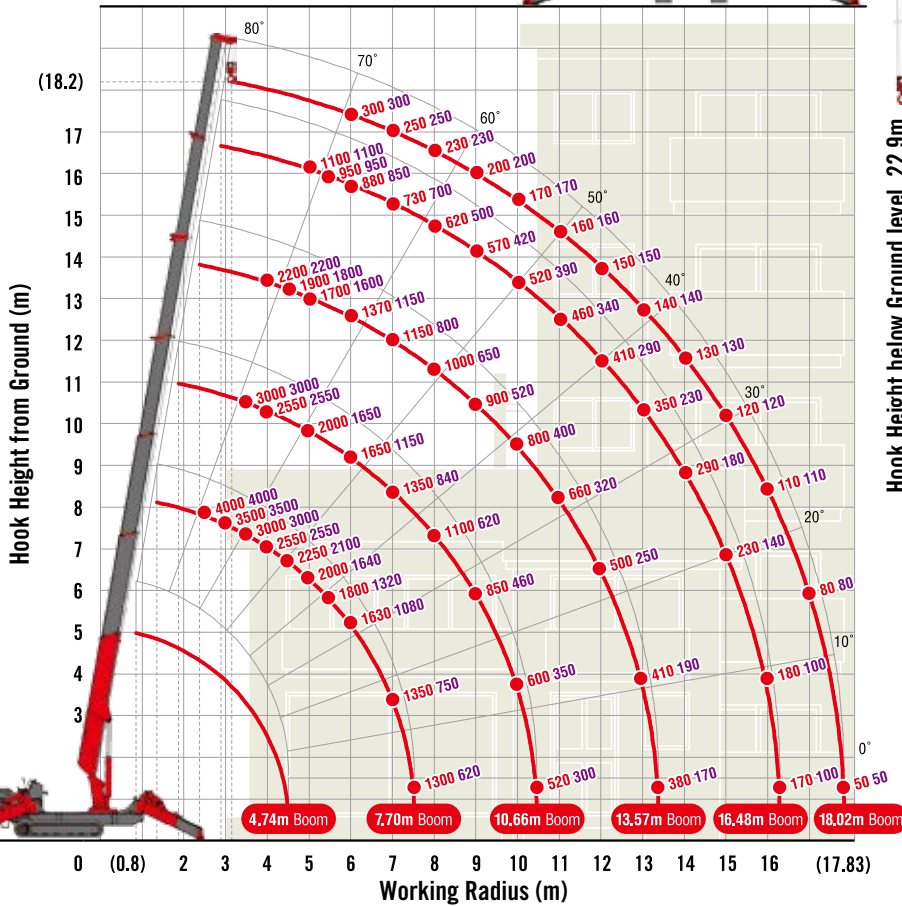
Crane model	URW547C4	
	A (Standard)	E-1(Safe load indicator)
Lifting capacity	Max. 4.05t at 2.5m	
Working radius	Min. 0.8m, Max. 17.83m	
Hook height (Approx.)	Above ground level	Max. 18.2m
	Below ground level	Max. 22.9m (with 4-part line)
Boom	Length	Min. 3.99m to Max. 18.02m
	Extending speed	14.03m / 35 sec. [50Hz] 14.03m / 57 sec. [60Hz] 14.03m / 48 sec.
	Raising angle / speed	0° to 80° / 18 sec. [50Hz] 0° to 80° / 30 sec. [60Hz] 0° to 80° / 25 sec.
	Structure	7-section box beam type telescoping boom
Winch	Single line speed	56 m/min (at 5th layer) [50Hz] 28 m/min (at 5th layer) [60Hz] 32.8 m/min (at 5th layer)
	Hook speed	14 m/min (at 5th layer with 4-part line) [50Hz] 7m/min (at 5th layer with 4-part line) [60Hz] 8.2 m/min (at 5th layer with 4-part line)
	Wire rope	Construction : IWRC L6 x P-WS(26) / Diameter x Length : 8mm x 103m / Breaking strength : 53kN [5400 kgf]
	Hook block	4t capacity, 2 sheaves with safety latch
Stewing	Range	360° continuous rotation on a ball bearing race
	Speed	2.5 rpm [50Hz] 2.0 rpm [60Hz] 2.3 rpm
Outriggers	Horizontal, Vertical A double acting hydraulic cylinder, direct pushing type (Directly connected with hydraulic automatic lock device)	
Hydraulic pump	Type	Variable delivery piston pump
	Rated pressure	For crawling: 21.6 MPa [220 kgf/cm <sup>2</sup> ] For crane: 20.6 MPa [210 kgf/cm <sup>2</sup> ]
Hydraulic oil tank capacity	75 liters	
Safety devices [with Safe load indicator]	Pressure relief valve for hydraulic circuit / Counterbalance valves for boom raising and boom telescoping cylinders / Pilot-operated check valves for outrigger cylinders (Horizontal) / Double pilot-operated check valves for outrigger cylinders (Vertical) / Boom angle indicator with load indicator / Hook safety latch / Automatic mechanical brake for winch / Automatic stop for overwinding / Overwinding alarm / Automatic stop for leaving minimum wire rope / Emergency stop button / Inter-lock device of crane and crawling levers / Level / Three colored lamp / Headlight / Digital load meter* / Automatic stop for overloading* / Safe load indicator / Inter-lock device of crane and outriggers / Outrigger ground contact detector	

\* Only for standard model

# MINI CRAWLER CRANE

## WORKING RANGE & NET RATED LOADS (kg)

Outrigger ● Max-extended NOT max-extended



Hook Height below Ground level 22.9m

with Electric power unit (Option)



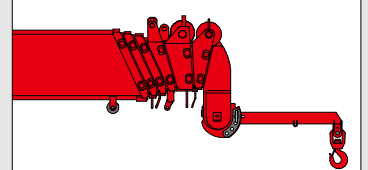
Rated power	7.5kW (3-phase 4 poles)
Voltage	AC 200V or 400V (50Hz / 60Hz)

\*No cable included.

Three colored lamp



Searcher hook assembly (Option)



NOTE: Only for safe load indicator model.

Length	800mm
Lifting capacity	Max. 500kg
Tilt angles	0°, 20°, 40°, 60°

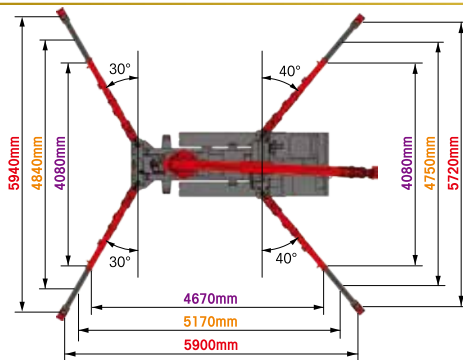
## OUTRIGGER POSITIONS

Outrigger Max-extended

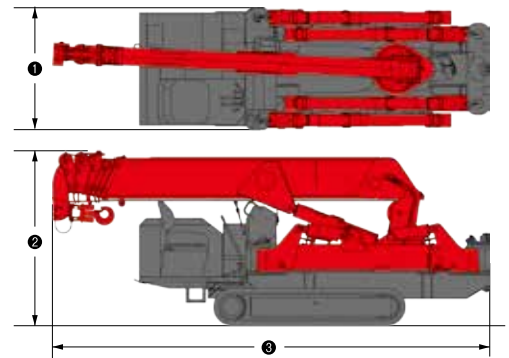
Outrigger Mid-extended

Outrigger Min-extended

\*Only for safe load indicator model



## DIMENSIONS [with Electric power unit]



## CRAWLING GEAR [with Electric power unit]

Crane model	URW547C4
Crawling speed	0~3 km/h, forward / backward [50Hz] 0~1.3 km/h [60Hz] 0~1.5 km/h
Hill climbing ability	23°
Tread length × width	1750mm × 300mm
Ground contact pressure	47.1 kPa [0.48 kgf/cm <sup>2</sup> ] 49.0 kPa [0.50 kgf/cm <sup>2</sup> ]
Engine manufacturer / model	Yanmar / 3TNV80F
Displacement	1266cc
Maximum output	15.2kW(20.7PS) / 2500 rpm, Rated output
Fuel	Diesel
Fuel tank capacity	40 liters
Steering	Hydraulic drive independent of left / right

Crane model	URW547C4
1 Total width	1380mm
2 Total height	1980mm
3 Total length	4950mm
Mass of crane	5070kg [5220kg]

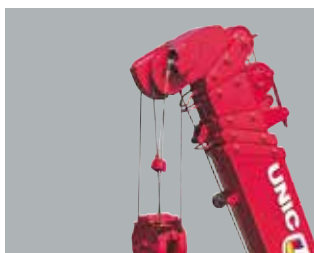
# Standard equipments and Options



This transmitter is subject to alternation in some countries. For more information, contact your local UNIC distributor.

## 1 Radio remote control

A Standard model  
B Safe load indicator model



## 2 Automatic stop for overwinding



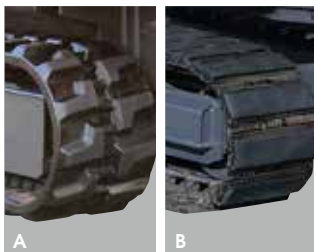
## 3 Automatic hook block stowing



## 4 Emergency stop button

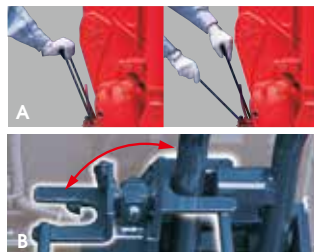


## 5 Level



## 6 Black crawler belt

A URW094C, URW295C, URW376C, URW546C, URW547C, URW706C  
B URW1006C



## 7 Inter-lock device of crane and crawling levers

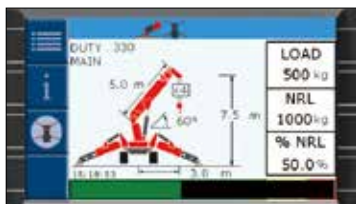
A URW094C, URW295C  
B URW376C, URW546C, URW547C, URW706C, URW1006C



## 8 Headlight



## 9 Safe load indicator (with outrigger ground contact detector)



## 10 Automatic stop for overloading (KM-100/ML-300)



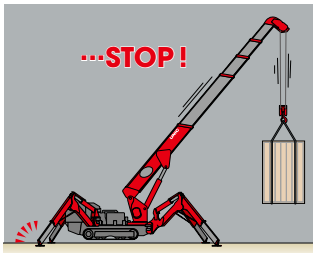
## 11 Load meter / Digital load meter

STANDARD EQUIPMENTS / OPTIONS [★ Standard, ● Factory-installed option, ○ Option, — Not available]

Crane model	URW094C			URW295C		
	URW094CP2E	URW295CP2A	URW295CP2E-1	URW295C4A	URW295C4E-1	URW295CB2A(ECO)
Fuel	Petrol	Petrol		Diesel		Battery
1 Radio remote control (A / B)	★ (A)	★ (A)	★ (B)	★ (A)	★ (B)	★ (A)
2 Automatic stop for overwinding	★	★	★	★	★	★
3 Automatic hook block stowing	★	★	★	★	★	★
4 Emergency stop button	★	★	★	★	★	★
5 Level	★	★	★	★	★	★
6 Black crawler belt (A / B)	★ (A)	★ (A)	★ (A)	★ (A)	★ (A)	★ (A)
7 Inter-lock device of crane and crawling levers	★ (A)	★ (A)	★ (A)	★ (A)	★ (A)	★ (A)
8 Head light	★	—	★	—	★	—
9 Safe load indicator (with outrigger ground contact detector)	—	—	★	—	★	—
10 Automatic stop for overloading (KM-100/ ML-300)	—	—	—	—	—	—
11 Load meter	★	★	—	★	—	★
Digital load meter	—	—	—	●	—	●
12 Turn over prevention device	—	★	—	★	—	★
13 Automatic stop for leaving minimum wire rope	★	●	★	●	★	●
14 Three colored lamp	—	●	★	●	★	●
Two colored lamp	—	—	—	—	—	—
15 Oil cooler	—	—	—	—	—	—
16 Fly jib with single line hook (Manual)	—	—	○	—	○	—
Fly jib with single line hook (Hydraulic tilt)	—	—	—	—	—	—
17 Single line hook	—	—	○	—	—	○
18 Searcher hook assembly	—	—	○	—	○	—
19 Working light	●	—	—	●	●	—
20 Outrigger mats	○	○	○	○	○	○
21 Gray crawler belt	●	●	●	●	●	●
22 Gray crawler belt (as spare)	○	○	○	○	○	○
23 Electric power unit (AC200V or AC400V) [Crane model]	—	● [URW295CP2AM]	● [URW295CP2EM-1]	● [URW295C4AM]	● [URW295C4EM-1]	—
24 20M cable for electric power unit (AC200V or AC400V)	—	○	○	○	○	—
25 2-part line hook block	—	—	○	—	○	—
26 4-2 multi-part line hook block	—	—	—	—	—	—



# MINI CRAWLER CRANE



**12** Turn over prevention device



**13** Automatic stop for leaving minimum wire rope



**14** Three colored lamp / Two colored lamp

A URW295C  
B URW376C, URW546C, URW547C, URW706C, URW1006C



**15** Oil cooler



**16** Fly jib with single line hook (Manual / Hydraulic tilt)

\*Searcher hook is included in manual Fly Jib



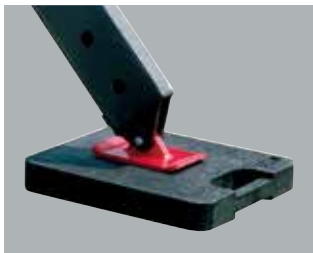
**17** Single line hook



**18** Searcher hook assembly



**19** Working light



**20** Outrigger mats



**21** Gray crawler belt

**22** Gray crawler belt (as spare)



**23** Electric power unit (AC200V or AC400V)

\*No cable included

**24** 20M cable for Electric power unit (AC200V or AC400V)

**25** 2-part line hook block

**26** 4-2 multi-part line hook block

URW376C		URW546C		URW547C		URW706C		URW1006C	
URW376C4A	URW376C4E-1	URW546C4A	URW546C4E-1	URW547C4A	URW547C4E-1	URW706C4A	URW706C4E-1	URW1006C2E-1	
Diesel		Diesel		Diesel		Diesel		Diesel	
★ (A)	★ (B)	★ (A)	★ (B)	★ (A)	★ (B)	★ (A)	★ (B)	★ (B)	1
★	★	★	★	★	★	★	★	★	2
★	★	★	★	★	★	★	★	★	3
★	★	★	★	★	★	★	★	★	4
★	★	★	★	★	★	★	★	★	5
★ (A)	★ (A)	★ (A)	★ (A)	★ (A)	★ (A)	★ (A)	★ (A)	★ (B)	6
★ (B)	★ (B)	★ (B)	★ (B)	★ (B)	★ (B)	★ (B)	★ (B)	★ (B)	7
★	★	★	★	★	★	★	★	★	8
—	★	—	★	—	★	—	★	★	9
★ (KM-100)	—	★ (KM-100)	—	★ (KM-100)	—	★ (ML-300)	—	—	10
—	—	—	—	—	—	—	—	—	11
★	—	★	—	★	—	—	—	—	12
—	—	—	—	—	—	—	—	—	13
★	★	★	★	★	★	★	★	★	14
★	★	★	★	★	★	—	★	★	15
—	—	—	—	—	—	★	—	—	16
●	●	●	●	★	★	★	★	★	17
—	○	—	○	—	—	—	○	—	18
—	—	—	—	—	—	—	—	—	19
—	—	—	—	—	—	—	—	—	20
—	—	—	—	—	—	—	—	—	21
—	—	—	—	—	—	—	—	—	22
—	—	—	—	—	—	—	—	—	23
●	●	●	●	●	●	●	●	●	24
[URW376C4AM]	[URW376C4EM-1]	[URW546C4AM]	[URW546C4EM-1]	[URW547C4AM]	[URW547C4EM-1]	[URW706C4AM]	[URW706C4EM-1]	[URW1006C2EM-1]	25
○	○	○	○	○	○	○	○	—	26
—	—	—	—	—	—	—	—	—	
—	—	—	—	—	—	—	●	★	